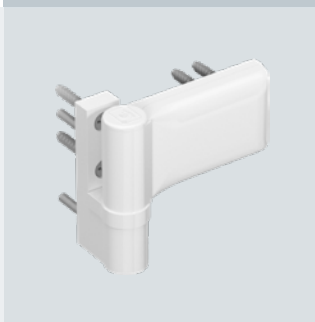
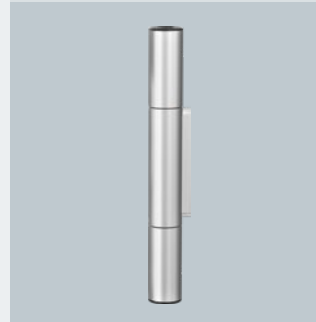
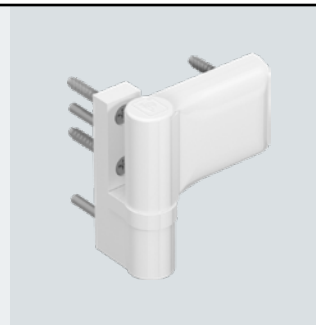




Hahn Produktkatalog

F Catalogue produits

GB Product catalogue





HAHN KLEMMBAND NG SMALL



DESCRIPTION

HAHN NG KLEMMBAND, 2-PIECE SMALL – FOR QUICK INSTALLATION WITHOUT ANY DRILLING

Of the Klemmband NG series combine the design requirement of a butt hinge with the simplicity and efficiency of a clamp hinge. The small 2-piece Klemmband NG supports doors weighing up to 90 kg thanks to its innovative clamping screws and offers the Hahn-standard convenience. Thanks to their profile-fitted long hinge straps, the hinges allow for a form-fit, non-positive connection with the frame and thus ensure optimal stability. The small clamp hinge can be adjusted both horizontally and vertically without lifting and removing the door and does not exhibit any misalignment even after adjustment.

■ Areas of application:

- Doors made of metal sections, suited for both residential and commercial structures
- Side entrance doors
 - Entrance doors for flats
 - Interior doors
 - Exterior doors
 - Functional doors



SYSTEM/APPLICATION

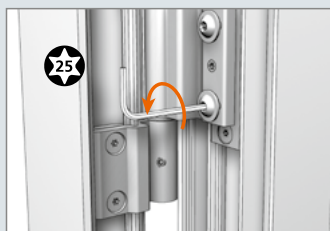
- Material: Made of extruded aluminium
- Fastening method: 1-piece clamping plate
- Load capacity: Max. 90 kg depending on profile design
- Adjustability:
Without raising or removing the door adjustable in 4 directions:
 - Horizontal adjustment ± 2 mm
 - Vertical with height adjustment unit
- Usable DIN left / DIN right
- Certifications: CE-certified according to EN1935:2002, hinge class 12
- Colours: Hinges available in anodised colours and RAL colours
- Maintenance-free

The Hahn Klemmband is a system-adapted hinge which was developed in close co-operation with door manufacturers. Different door/frame combinations require special solutions. To help us process your enquiry and order, we require accurate information about the respective door/frame combination to be used.



Dichtungsdruck · Compression du joint · Sealing pressure

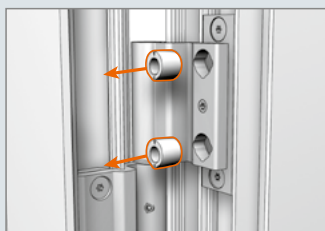
Für Flügelgewichte max. 90 Kg · Pour poids maxi de vantail de 90 kg · For doors weighing up to max. 90 kg



Befestigungsschrauben des Flügelbandteils entfernen.

Enlevez les vis de fixation de la partie ouvrante.

Remove fastening screws of the sash part of the hinge.



Exzenterbuchsen herausnehmen.

Enlevez les bagues excentriques.

Take out the eccentric bushings.



Zum Band drehen: Andruck erhöhen

Flèches en direction de la paumelle : Augmenter la compression

Turn towards hinge: Increase sealing pressure



Vom Band weg drehen: Andruck verringern

Flèches en direction opposée de la paumelle : Diminuer la compression

Turn away from hinge: Decrease sealing pressure



Flügelbandteil wieder festschrauben.

Resserrez la partie ouvrante.

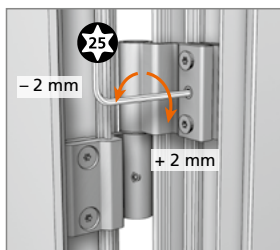
Retighten screws of the sash part of the hinge.

Exzenterbuchsen gemäß Darstellung einsetzen.

Positionnez les bagues excentriques selon l'illustr.

Insert eccentric bushings as shown.

Horizontalverstellung · Réglage horizontal · Horizontal adjustment



Horizontalverstellung ± 2 mm

Réglage horizontal ± 2 mm

Horizontal adjustment ± 2 mm



Flügel vor Verstellung unterstützen.

Calez le vantail avant d'effectuer les réglages.

Support door leaf prior to adjusting.



Lagerbuchse aus wartungsfreiem Kunststoff – keinesfalls schmieren!

Douille en matière plastique ne requérant aucun entretien – ne graisser en aucun cas !

Bearing bushes made of maintenance-free PVC – do not lubricate!



Hahn Serie 60 AT



Hahn KT-EV



Hahn VL-Band ST



Hahn Rollenband G



Hahn KT-RV



*Für jede
Situation
die passende
Lösung*



Hahn KT-V 6R



Hahn VL-Band 180



Hahn Rollenband NG



Hahn KT-RN



Hahn Türband 4 AT



Hahn KT-Rollenband NL



Hahn KT-SV



Hahn KT-B 6R



Hahn Türband 4 AT



Hahn KT-N 6R



Hahn Türband 4 HM0



Hahn KT-RKN



Hahn KT-RV



Hahn KT-EN



Hahn Rollenband AT



Hahn Serie 60 AT



Hahn VL-Band AT



Hahn Klemmband



Hahn KT-RKV



Hahn Klemmband



Hahn AT-G



Hahn KT-RN

 **Dr. Hahn**[®]
TÜRBÄNDER. MADE IN GERMANY.



Dr. Hahn GmbH & Co. KG

Trompeterallee 162-170 · D-41189 Mönchengladbach
Postfach 400109 · D-41181 Mönchengladbach
Phone +49(0)2166 954-3 · E-Mail: sales@dr-hahn.com
www.dr-hahn.eu